
Report To: ENVIRONMENT & REGENERATION COMMITTEE **Date:** 12 January 2017

Report By: CORPORATE DIRECTOR,
ENVIRONMENT, REGENERATION &
RESOURCES **Report No:** LP/001/17

Contact Officer: CHRISTINE MARSHALL **Contact No:** 01475 712314

Subject: PROPOSED TRAFFIC REGULATION ORDER – DISABLED PERSONS’ PARKING PLACES (ON-STREET) ORDER NO. 4 2016

1.0 PURPOSE

- 1.1 Local Authorities are empowered to make Orders under the Road Traffic Regulation Act 1984 as amended and under the Council’s Scheme of Administration the Head of Environmental and Commercial Services is responsible for the making, implementation and review of Traffic Management Orders and Traffic Regulation Orders.
- 1.2 The provision of on-street parking places for use by disabled drivers, who are the holders of a Disabled Person’s Badge, is regulated by The Disabled Persons’ Parking Places (Scotland) Act 2009. Inverclyde Council is required to promote a Traffic Regulation Order to regulate the use of such parking places.

2.0 SUMMARY

- 2.1 In order to comply with The Disabled Persons’ Parking Places (Scotland) Act 2009, Section 5, it is proposed to introduce a Traffic Regulation Order to accompany the provision of parking places for the disabled. This will restrict parking to only those vehicles which display a Disabled Person’s Badge and will enable the Police to enforce such restrictions. The proposed Order will also revoke those parking places no longer required in order to maximise street parking capacity.

3.0 RECOMMENDATION

- 3.1 That the Committee recommend to The Inverclyde Council the making of the Traffic Regulation Order – Disabled Persons’ Parking Places (On-Street) Order No. 4 2016 and remit it to the Head of Environmental and Commercial Services and the Head of Legal and Property Services to arrange for its implementation.

Gerard Malone
Head of Legal and Property Services

4.0 BACKGROUND

- 4.1 Currently no Traffic Regulation Orders exist at the locations shown in the Order which would prohibit the allocation of parking places for Disabled Person's Badge holders.
- 4.2 No objections were received to the proposed Order.
- 4.3 The Committee is asked to note that, if approved, the Order may not be implemented until the making of the Order has been advertised to allow any persons who so wish a period of six weeks to question the validity of the Order in terms of the Road Traffic Regulation Act 1984.

5.0 IMPLICATIONS

Finance

- 5.1 There are no financial implications arising from this report.

Legal

- 5.2 There are no legal implications arising from this report.

Human Resources

- 5.3 There are no HR implications arising from this report.

Equalities

- 5.4 There are no equalities implications arising from this report.

Repopulation

- 5.5 There are no repopulation implications arising from this report.

6.0 CONSULTATIONS

- 6.1 The proposals have been advertised in the Greenock Telegraph and full details of the proposals have been made available for public inspection during normal office hours at the offices of the Head of Environmental and Commercial Services, the Head of Legal and Property Services and at Central, Port Glasgow, Gourock, Inverkip and Wemyss Bay Libraries. A copy of the draft Order is appended hereto for Members' information. Appendix 1

7.0 LIST OF BACKGROUND PAPERS

- 7.1 None

THE INVERCLYDE COUNCIL

**DISABLED PERSONS' PARKING PLACES
(ON-STREET) ORDER NO. 4 2016**

TRAFFIC REGULATION ORDER

**THE INVERCLYDE COUNCIL
DISABLED PERSONS' PARKING PLACES (ON-STREET)
ORDER NO. 4 2016**

The Inverclyde Council in exercise of the powers conferred on them by Section 32(1) of the Road Traffic Regulation Act 1984 ("the Act") and of all other enabling powers and after consultation with the Chief Constable of Police Scotland in accordance with Part III of Schedule 9 to the Act hereby make the following Order.

1. This Order may be cited as "The Inverclyde Council Disabled Persons' Parking Places (On-Street) Order No. 4 2016" and shall come into operation on the *** day of ***.
2. In this Order the following expressions have the meanings hereby assigned to them:-
 - "Council" means The Inverclyde Council or its successors as Roads Authority;
 - "Disabled Person's Badge" means:-
 - (a) a badge issued under Section 21 of the Chronically Sick and Disabled Persons Act 1970 (as amended);
 - (b) a badge issued under a provision of the law of Northern Ireland corresponding to that section; or
 - (c) a badge issued by any member State other than the United Kingdom for purposes corresponding to the purposes for which badges under that section are issued;and which has not ceased to be in force;
 - "Disabled Person's Vehicle" means a Vehicle which is displaying a Disabled Person's Badge in a Relevant Position as prescribed by the Local Authorities' Traffic Orders (Exemptions for Disabled Persons) (Scotland) Regulations 2002;
 - "Parking Attendant" means a person employed in accordance with Section 63A of the Act to carry out the functions therein;
 - "Parking Place" means an area of land specified by number and name in Columns 1 and 2 in the Schedule to this Order;
 - "Relevant Position" means, for the display of a Disabled Person's Badge, that the Disabled Person's Badge is displayed as prescribed by Regulation 12 of the Disabled Persons (Badges for Motor Vehicles) (Scotland) Regulations 2000 (as amended); and
 - "Traffic Sign" means a sign prescribed or authorised under Section 64 of the Act; and
 - "Vehicle" unless the context otherwise requires, means a vehicle of any description and includes a machine or implement of any kind drawn or propelled along roads whether or not by mechanical power.
3. The Schedule titled "Disabled Persons' Parking Places (On-Street) Order No. 4 2016" forms the Schedule to this Order.

4. Each area of road which is described in the Schedule to this Order and the plans relative to this Order is hereby designated as a Parking Place.
5. The Parking Places shall only be used for the leaving of Disabled Persons' Vehicles displaying a valid Disabled Person's Badge.
6. The limits of each Parking Place shall be indicated on the carriageway as prescribed by The Traffic Signs Regulations and General Directions 2016.
7. Every Vehicle left in any Parking Place shall stand such that no Parking Place is occupied by more than one Vehicle and that every part of the Vehicle is within the limits of the Parking Place provided that, where the length of a Vehicle precludes compliance with this paragraph, such Vehicle shall be deemed to be within the limits of a Parking Place if:-
 - the extreme front portion or, as the case may be, the extreme rear portion of the Vehicle is within 300mm of an indication on the carriageway provided under this Order in relation to the Parking Place; and
 - the Vehicle, or any part thereof, is not within the limits of any adjoining parking place.
8. Any person duly authorised by the Council or a police officer in uniform or a traffic warden or Parking Attendant may move or cause to be moved in case of any emergency, to any place they think fit, Vehicles left in a Parking Place.
9. Any person duly authorised by the Council may suspend the use of a Parking Place or any part thereof whenever such suspension is considered reasonably necessary:-
 - for the purpose of facilitating the movement of traffic or promoting its safety;
 - for the purpose of any building operation, demolition, or excavation in or adjacent to the Parking Place or the laying, erection, alteration, removal or repair in or adjacent to the Parking Place of any sewer or of any main, pipe, apparatus for the supply of gas, water electricity or of any telecommunications apparatus, Traffic Sign or parking meter;
 - for the convenience of occupiers of premises adjacent to the Parking Place on any occasion of the removal of furniture from one office or dwellinghouse to another or the removal of furniture from such premises to a depository or to such premises from a depository;
 - on any occasion on which it is likely by reason of some special attraction that any street will be thronged or obstructed; or
 - for the convenience of occupiers of premises adjacent to the Parking Place at times of weddings or funerals or on other special occasions.
10. A police officer in uniform may suspend for not longer than twenty four hours the use of a Parking Place or part thereof whenever such suspension is considered reasonably necessary for the purpose of facilitating the movement of traffic or promoting its safety.

11. This Order insofar as it relates to the Parking Places to be revoked (R) and amended, as specified in the Schedule to this Order, partially revokes and amends The Inverclyde Council On-Street Parking Places (Without Charges) Order Nos: 01/2005, 01/2006, 02/2006, 03/2007, 01/2008, 02/2008, 02/2009 and The Inverclyde Council Disabled Persons' Parking Places (On-Street) Order Nos: 04/2012, 03/2013 and 02/2015 respectively.

*Sealed with the Common Seal of The Inverclyde Council and subscribed for them and on their behalf by **, Proper Officer, at Greenock on the ** day of **, Two Thousand and **.*

DRAFT

INVERCLYDE COUNCIL

**DISABLED PERSONS' PARKING PLACES (ON-STREET)
ORDER No.4 2016**

SCHEDULE

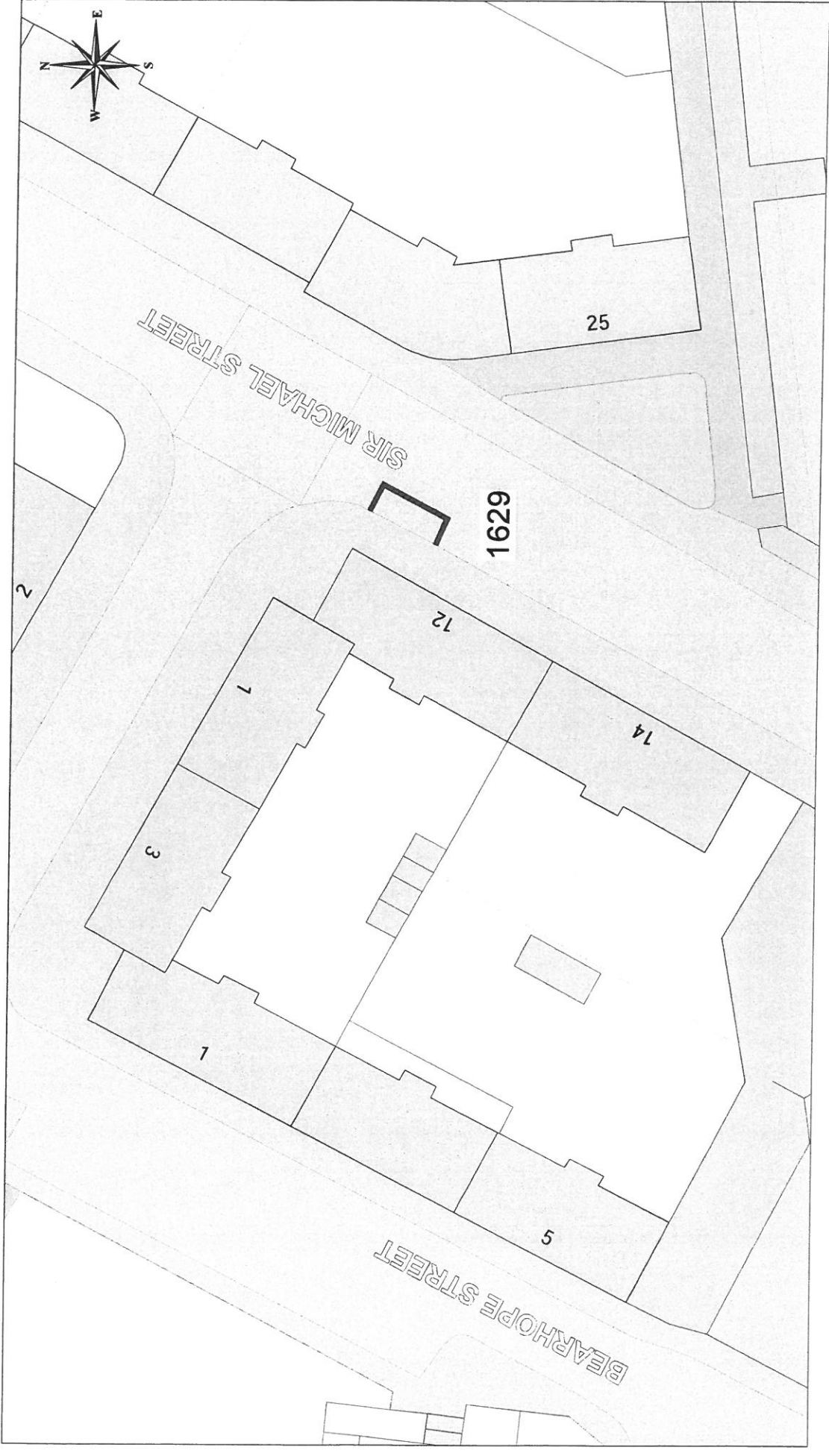
Rev B

All and whole that area of ground as described in Column 2 in the table below:

Column 1	Column 2
<u>Ref No.</u>	<u>Address of Disabled Person's Parking Place to be created or revoked @ "ex-adverso"</u>
1629	12 Sir Michael Street, Greenock
1630	48 Cardwell Road, Gourrock
1632	48 Clynder Road, Greenock
1633	117 Bardrainney Avenue, Port Glasgow
1634	57 Berwick Road, Greenock
1638	44 Robertson Street, Greenock
1639a	10 John Street, Gourrock
1639b	10 John Street, Gourrock
1641	2 Auchendores Avenue, Port Glasgow
1643	43 Glen Crescent, Inverkip
1644	68 The Esplanade, Greenock
1645	1 Castle Mansions, Gourrock
1647	13 Roxburgh Avenue, Greenock
1698	5 Milton Road, Port Glasgow
1699	79 Glenside Road, Port Glasgow
	RELOCATE
1546	2 Flatterton Road, Greenock



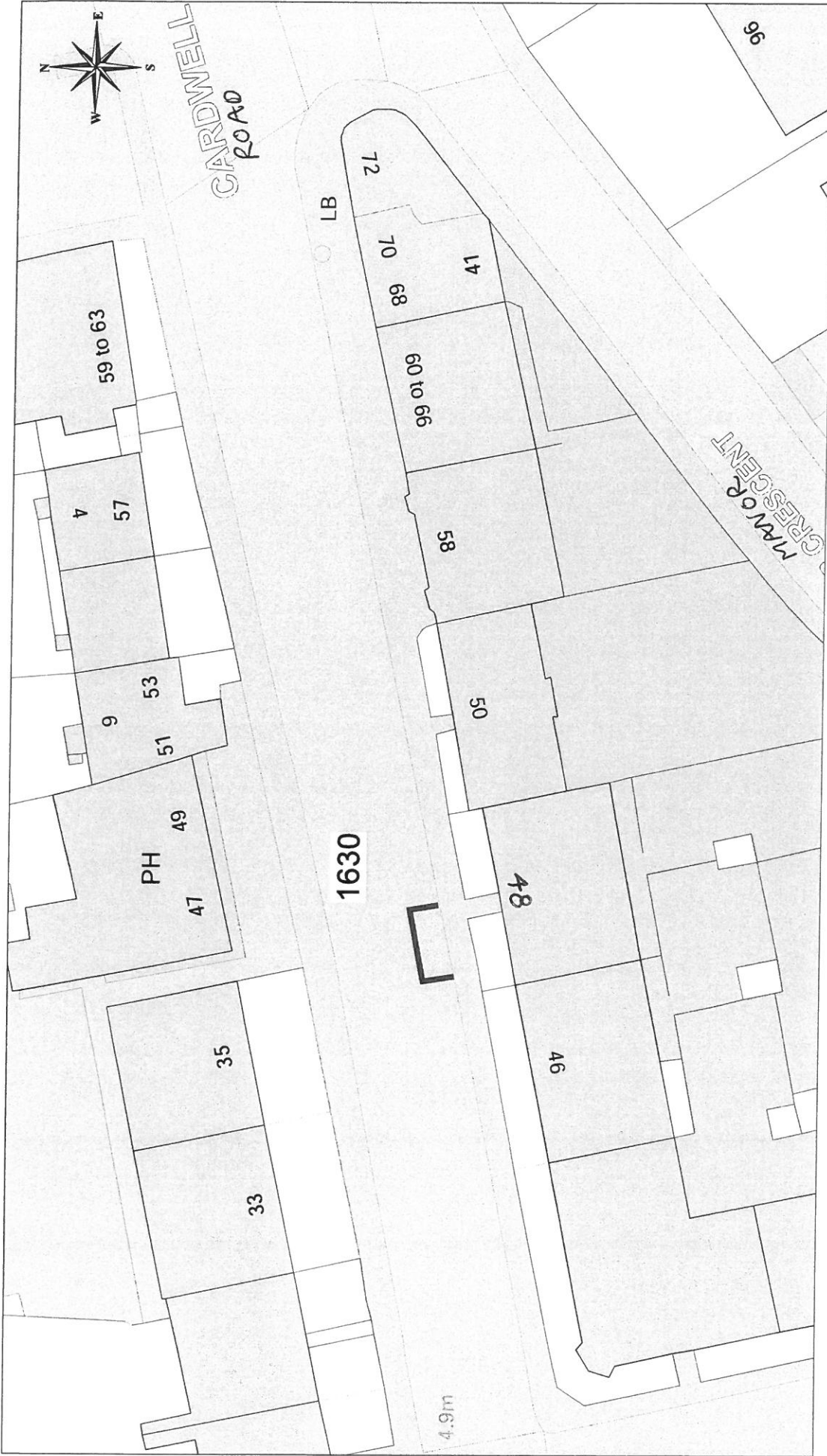
This material has been reproduced from Ordnance Survey digital map data with the permission of the Controller of Her Majesty's Stationery Office. © Crown copyright. Licence Number: 100023421



DISABLED PERSONS' PARKING PLACE
12 SIR MICHAEL STREET, GREENOCK
PLACE No. 1629

Inverclyde council
Environmental Services

Regeneration & Environment
Corporate Director: Aubrey Fawcett
Municipal Buildings
Cycle Square
Greenock
PA15 1LY
Tel: 01475 712712
Fax: 01475 712731
aubrey.fawcett@inverclyde.gov.uk



Inverclyde
council
Environmental Services

Regeneration & Environment
Corporate Director: Aubrey Fawcett

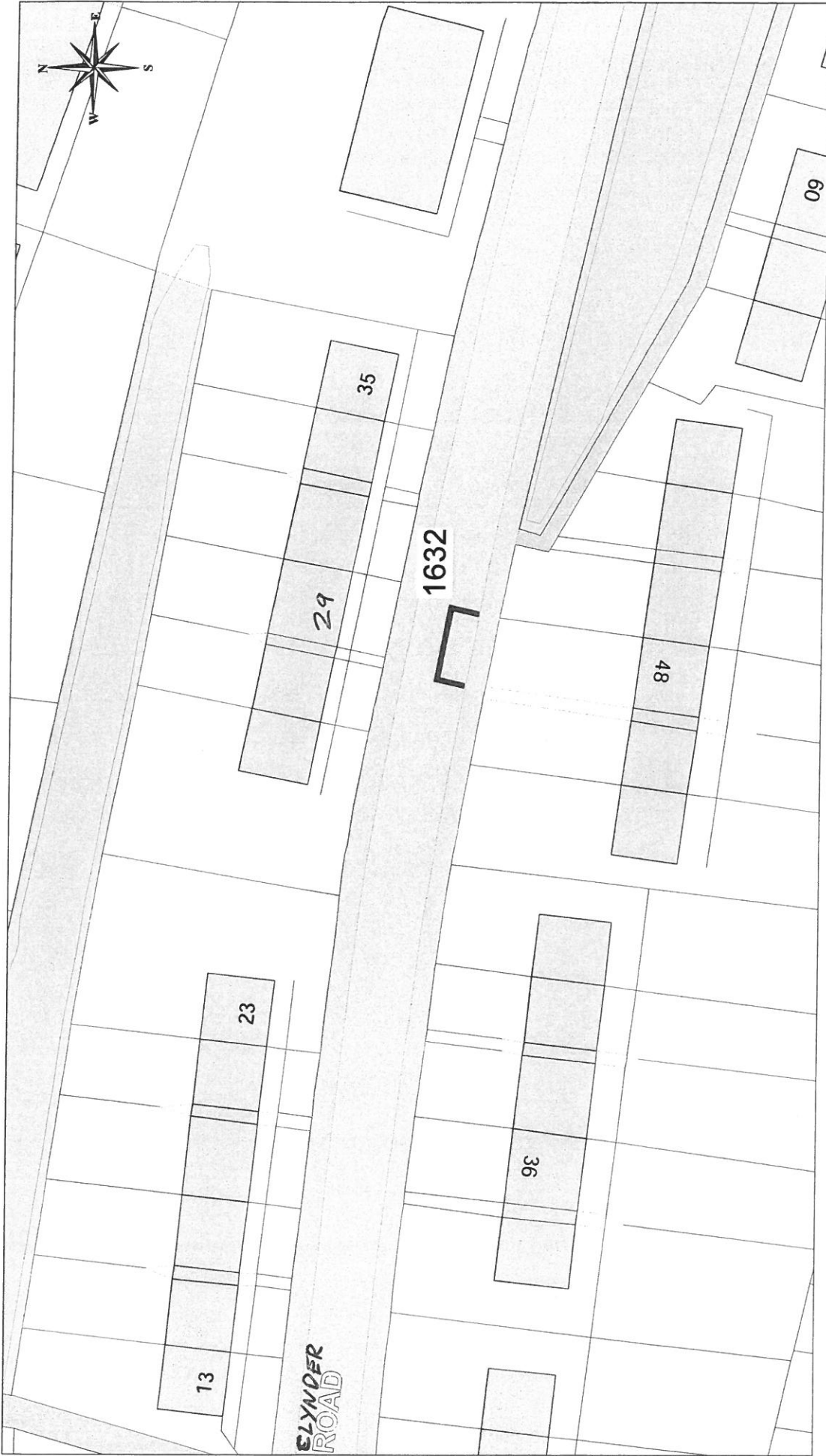
Municipal Buildings
Clyde Square
Greenock

PA15 1LJ
Tel: 01475 712712
Fax: 01475 712731
aubrey.fawcett@inverclyde.gov.uk

DISABLED PERSONS' PARKING PLACE
48 CARDWELL ROAD, GOUROCK
PLACE No. 1630



This material has been reproduced from
Ordnance Survey digital maps data with
the permission of the Controller of
Her Majesty's Stationery Office.
© Crown Copyright
Licence Number: 100023421

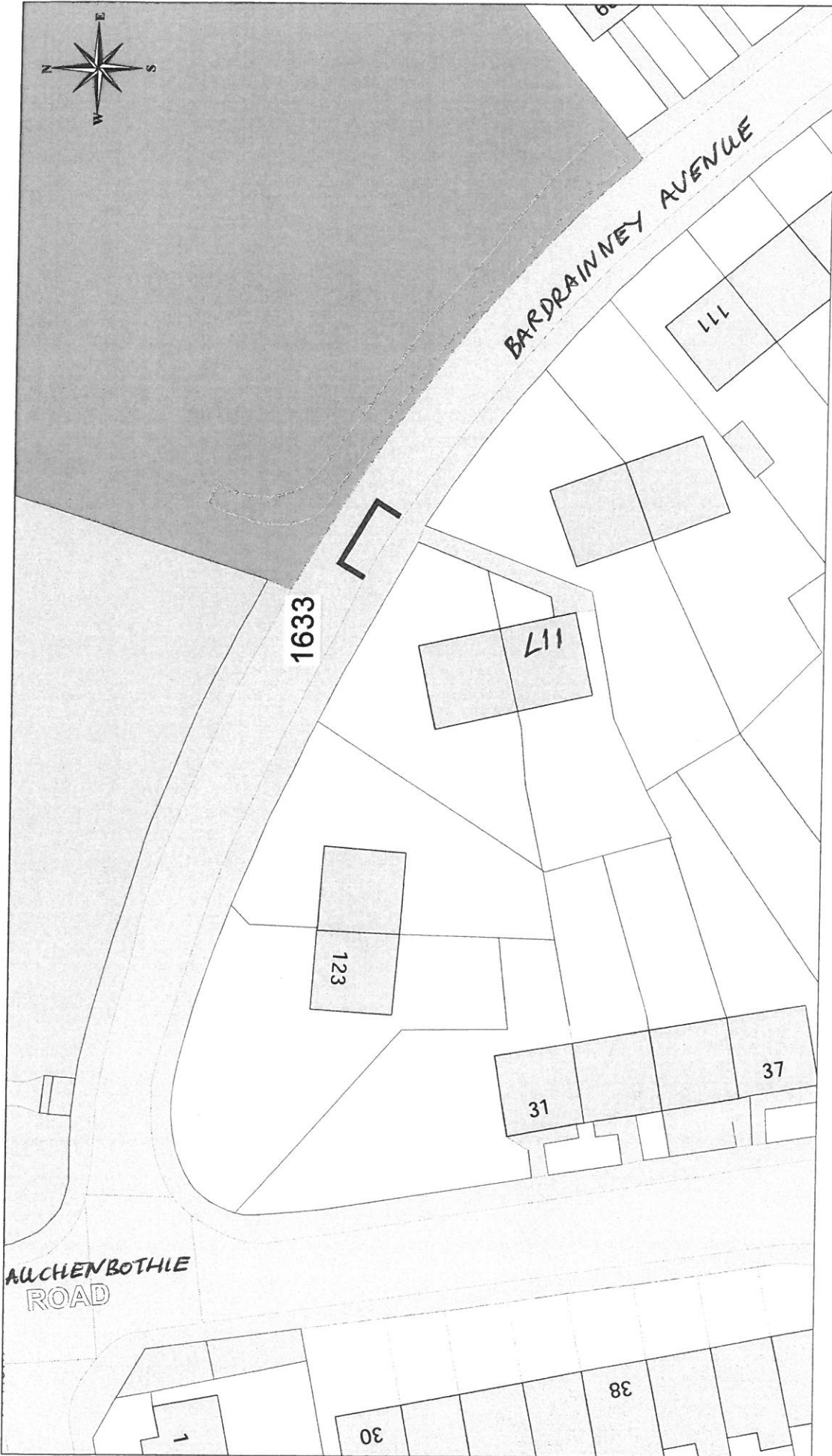



 Ordnance Survey
 Licensed System Supplier
This material has been reproduced from Ordnance Survey digital map data with the permission of Ordnance Survey, Her Majesty's Stationery Office, © Crown Copyright. Licence Number: 100023421

Inverclyde
council
 Environmental Services

Regeneration & Environment
 Corporate Director: Aubrey Fawcett
 Municipal Buildings
 Clyde Square
 Greenock
 TA 11 1LW
 Tel: 01475 712712
 Fax: 01475 712731
aubrey.fawcett@inverclyde.gov.uk

DISABLED PERSONS' PARKING PLACE
 48 CLYNDER ROAD, GREENOCK
 PLACE No. 1632

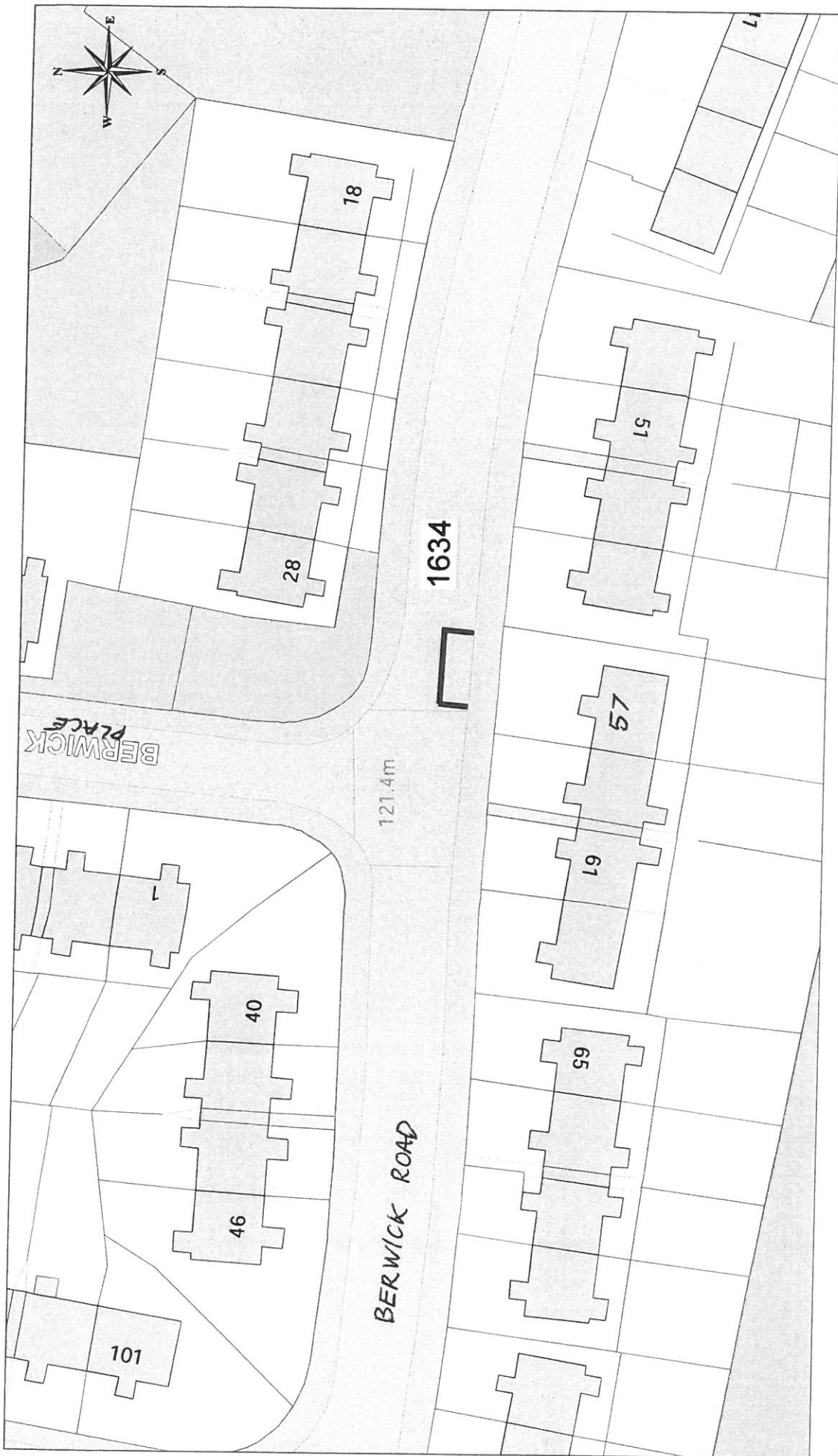


This material has been reproduced from Ordnance Survey digital data made available in accordance with the provisions of the Ordnance Survey Act 2003. © Crown copyright. Licence Number: 100033421

DISABLED PERSONS' PARKING PLACE
117 BARDRAINNEY AVENUE, PORT GLASGOW
PLACE No. 1633

Inverclyde
 council
 Environmental Services

Regeneration & Environment
 Corporate Director: Aubrey Fawcett
 Municipal Buildings
 Clyde Square
 PA15 1JX
 Tel: 01475 712712
 Fax: 01475 712731
aubrey.fawcett@inverclyde.gov.uk




Ordnance Survey
 Licensed System Supplier
This material has been reproduced from Ordnance Survey digital map data with the permission of the Controller of Her Majesty's Stationery Office. © Crown copyright. Licence Number: 100023421

DISABLED PERSONS' PARKING PLACE
57 BERWICK ROAD, GREENOCK
PLACE No. 1634

Inverclyde
 Council
Environmental Services
 Regeneration & Environment
 Corporate Director: Aubrey Fawcett
 Municipal Buildings
 Clyde Square
 Greenock
 PA 15 1LY
 Tel: 01475 712712
 Fax: 01475 712731
 aubrey.fawcett@inverclyde.gov.uk

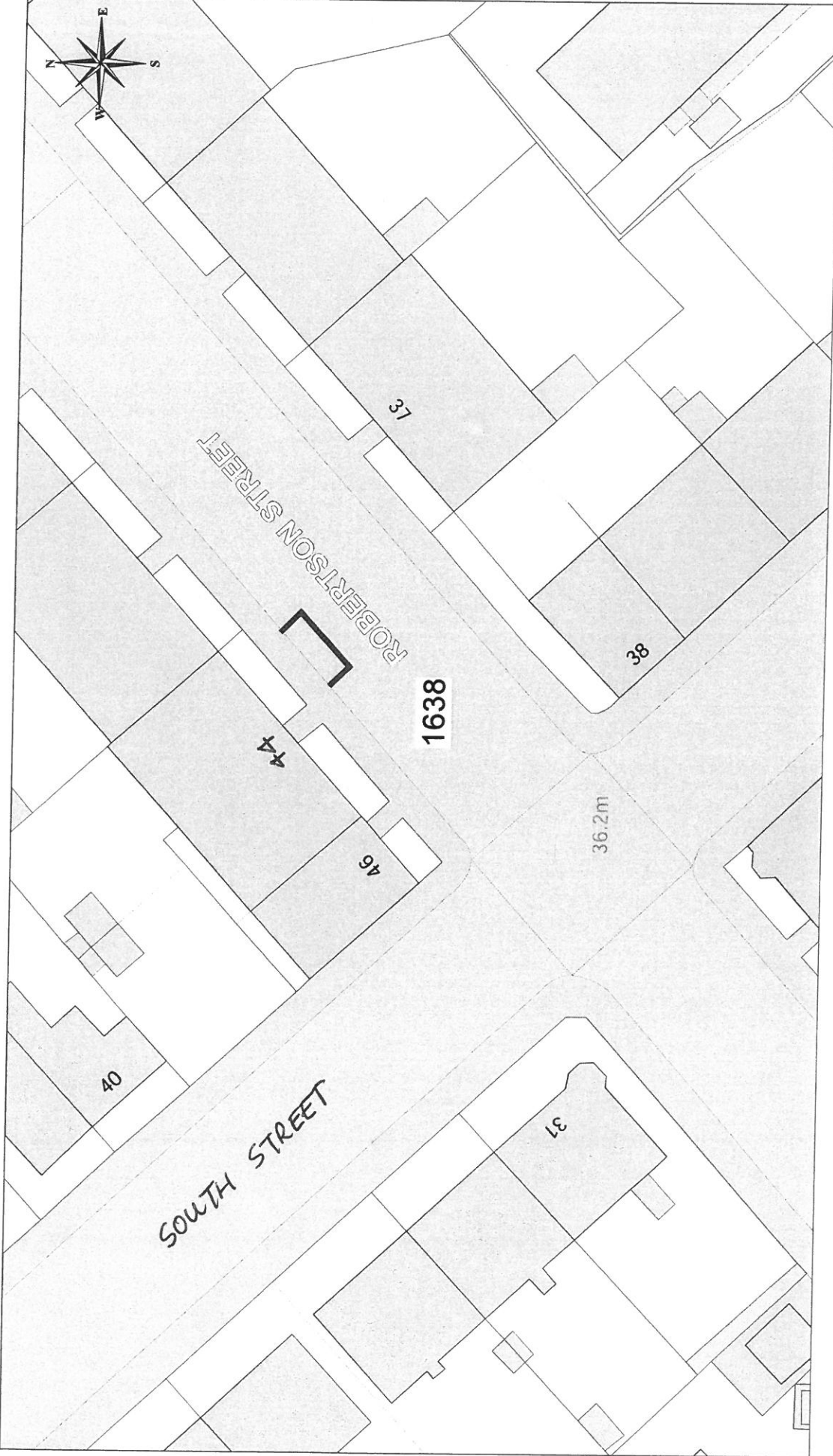


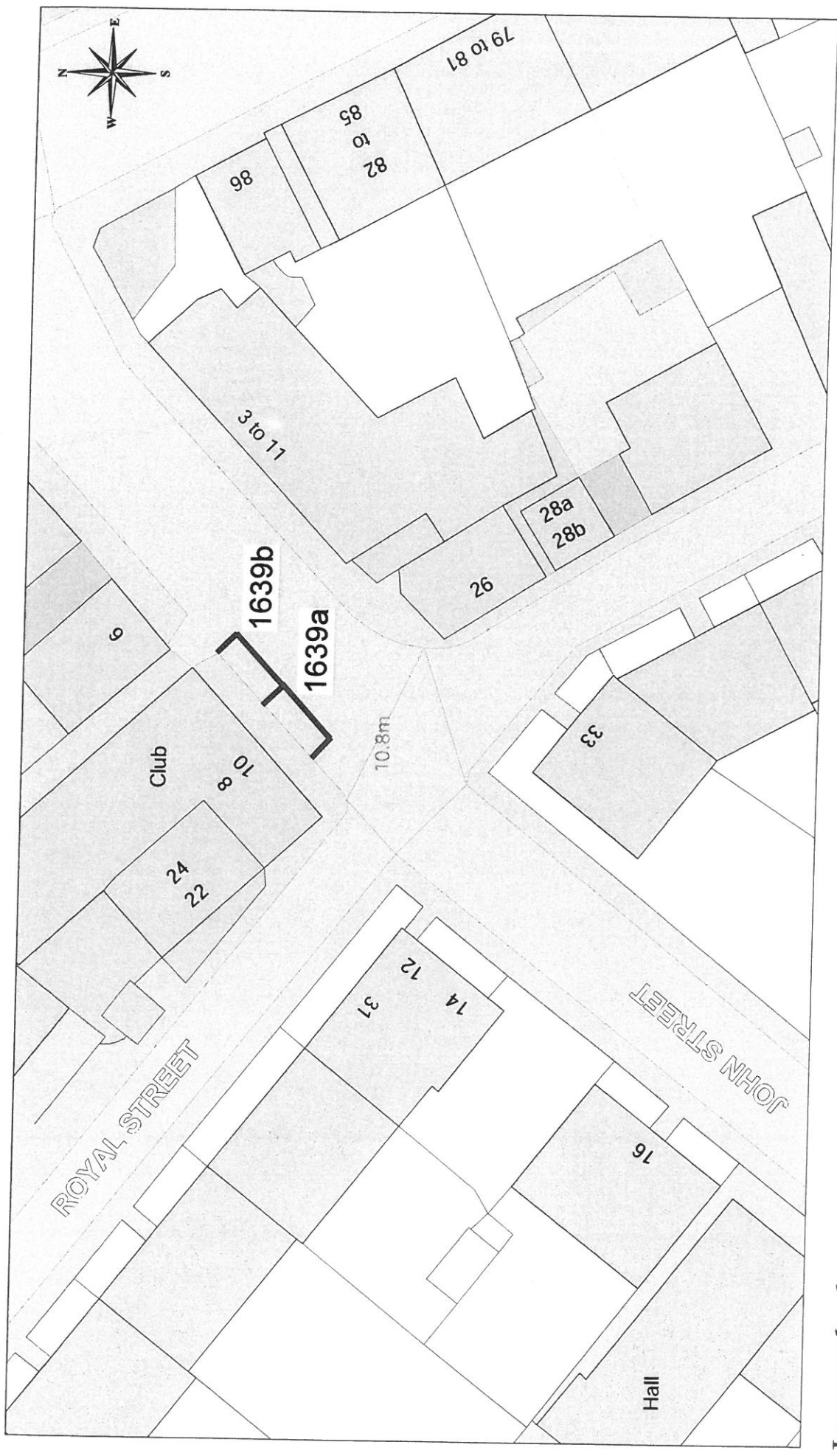
This material has been reproduced from the Ordnance Survey database with the permission of the Controller of Her Majesty's Stationery Office.
Licence Number: 100020421

DISABLED PERSONS' PARKING PLACE
44 ROBERTSON STREET, GREENOCK
PLACE No. 1638

Inverclyde
Council
Environmental Services

Regeneration & Environment
Corporate Director: Aubrey Fawcett
Municipal Buildings
Clyde Square
Greenock
PA15 1LY
Tel: 01475 712712
Fax: 01475 712731
aubrey.fawcett@inverclyde.gov.uk





Ordnance Survey
 Licensed System Supplier

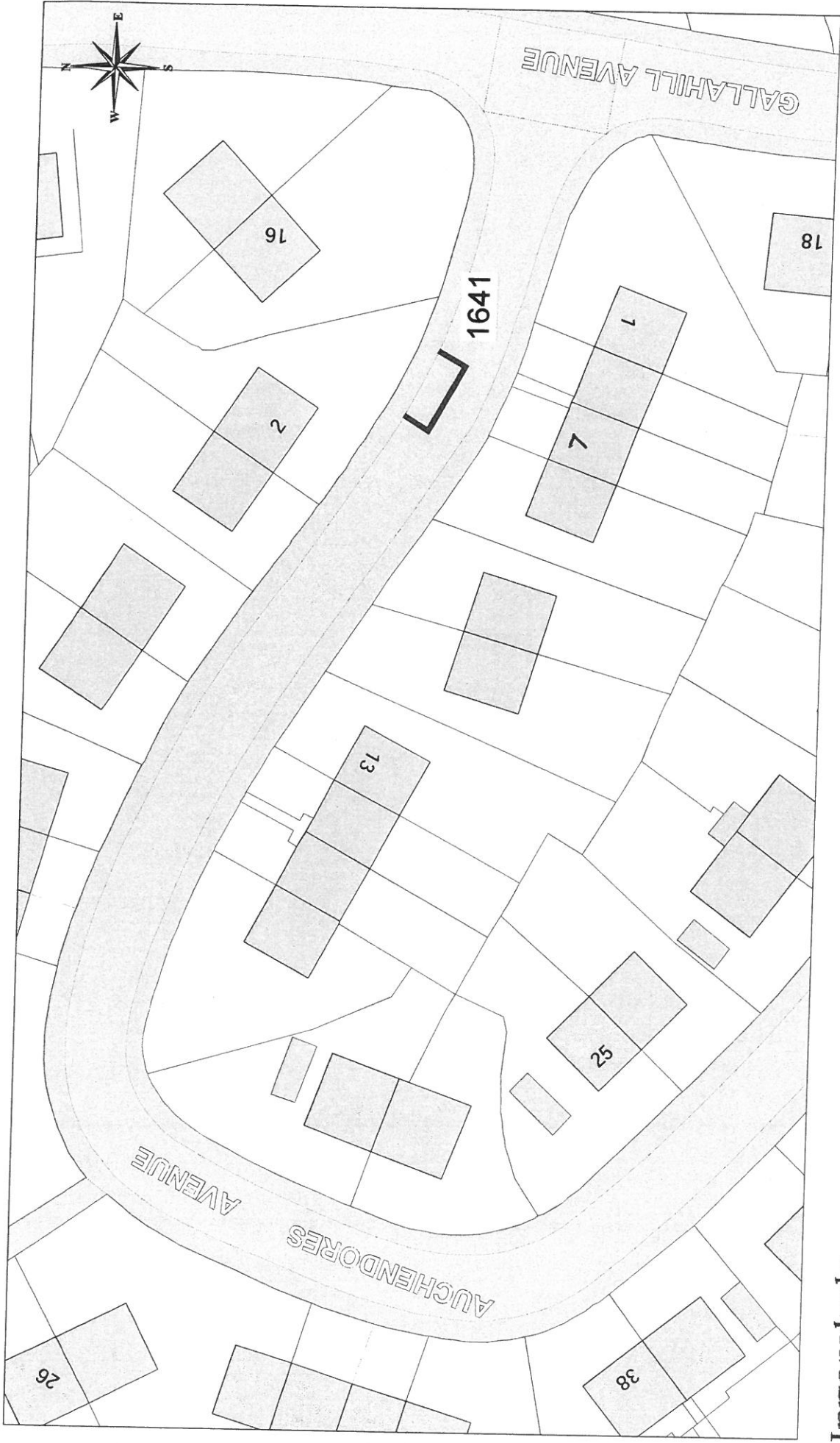
This material has been reproduced from Ordnance Survey digital maps data with the permission of Ordnance Survey. All rights reserved. © Crown Copyright. Licence Number: 100033421

DISABLED PERSONS' PARKING PLACE
10 JOHN STREET, GOUROCK
PLACES No. 1639a & 1639b

Inverclyde council
Environmental Services

Regeneration & Environment
 Corporate Director: Aubrey Fawcett

Municipal Buildings
 Clyde Square
 Greenock
 PA15 1LY
 Tel: 01475 712712
 Fax: 01475 712731
 aubrey.fawcett@inverclyde.gov.uk

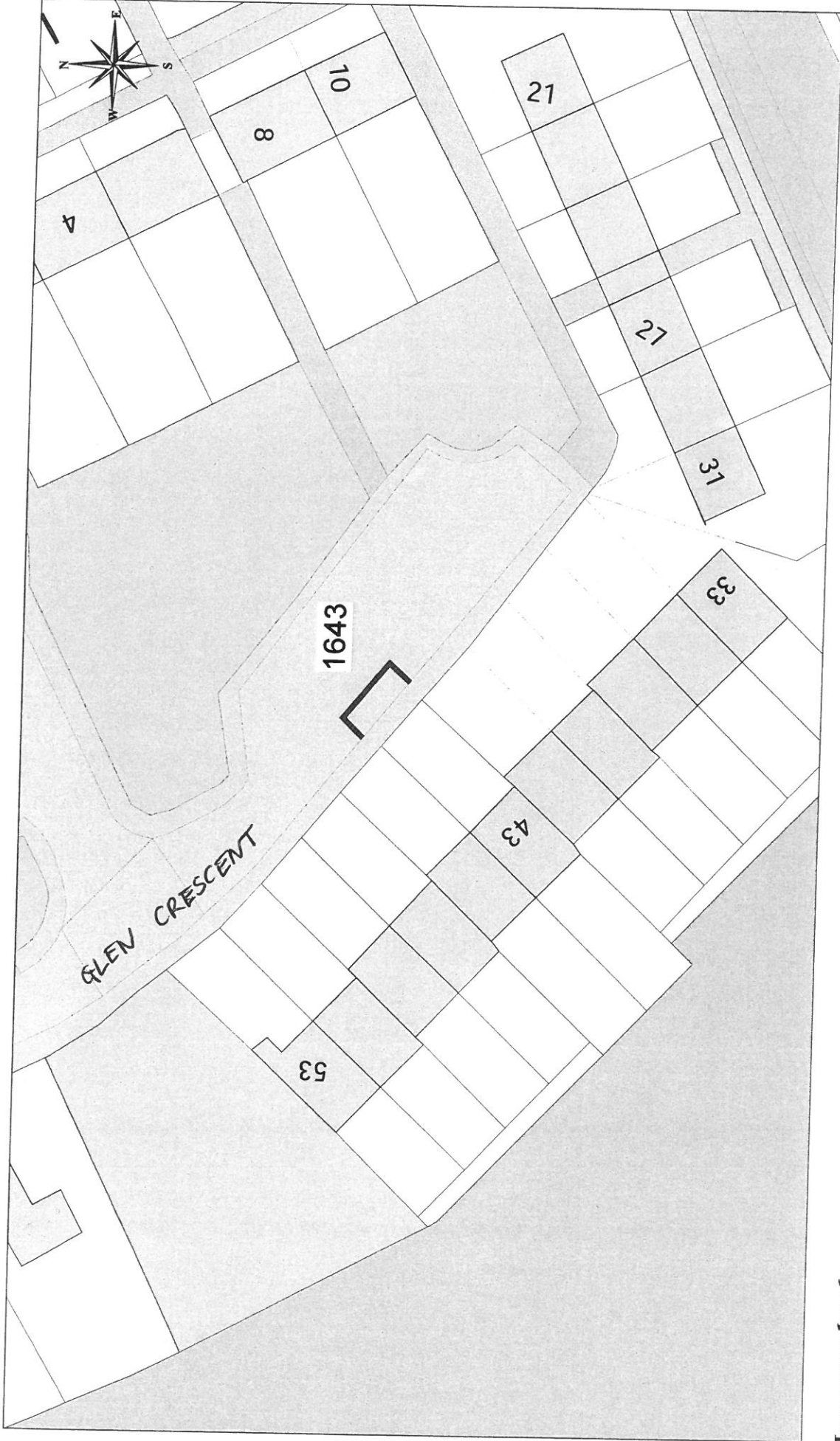



Ordnance Survey
 Licensed System Supplier
This material has been reproduced from Ordnance Survey digital map data with the permission of Ordnance Survey on behalf of Her Majesty's Stationery Office. © Crown Copyright. Licence Number: 100023423

DISABLED PERSONS' PARKING PLACE
2 AUCHENDORES AVENUE, PORT GLASGOW
PLACE No. 1641

Inverclyde
 council
 Environmental Services

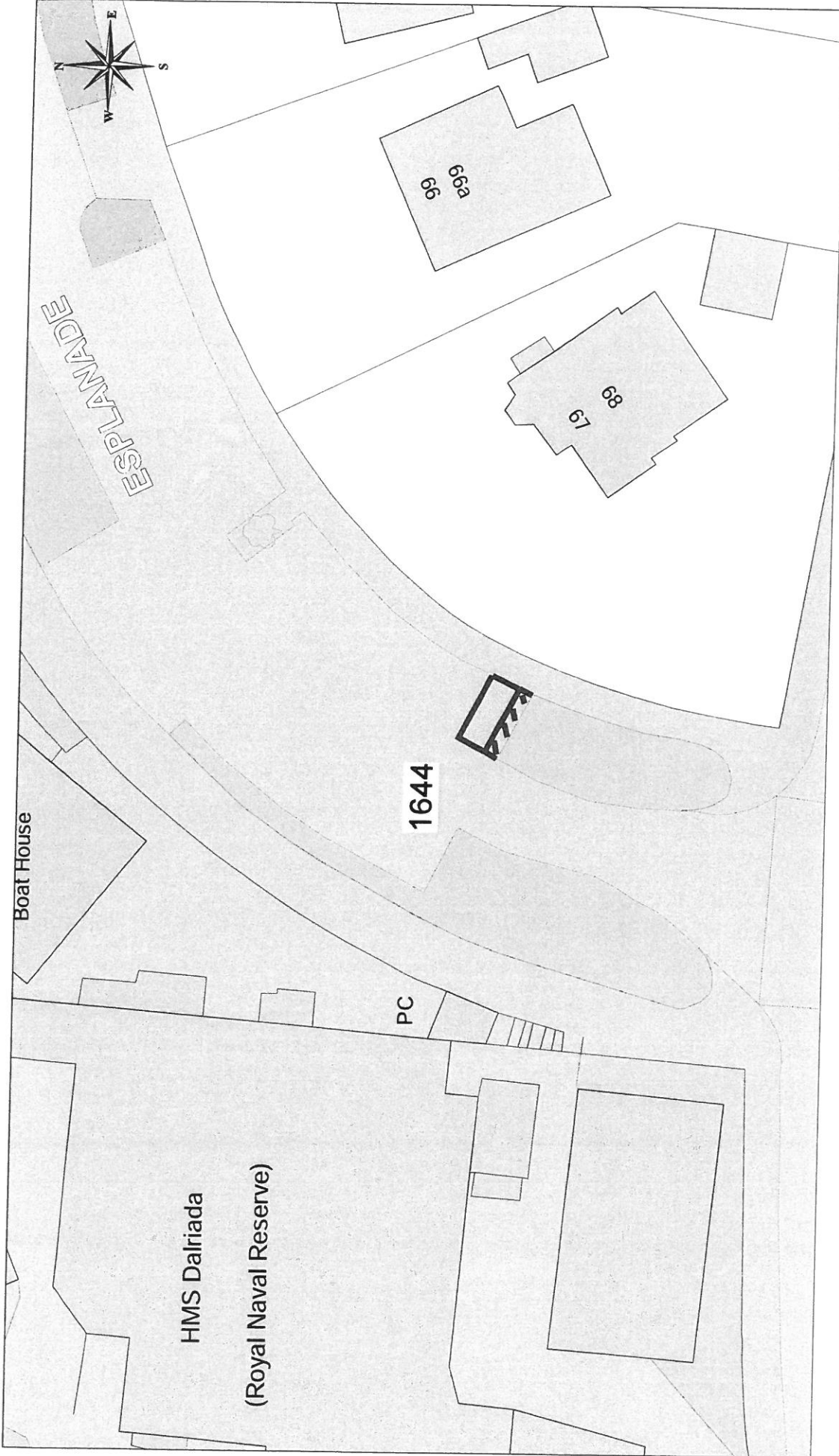
Regeneration & Environment
 Corporate Director: Aubrey Fawcett
 Municipal Buildings
 Clyde Square
 Greenock
 PA15 1LJ 01475 712712
 Fax: 01475 712731
 aubrey.fawcett@inverclyde.gov.uk




 Ordnance Survey
 Licensed System Supplier
This material has been reproduced from Ordnance Survey digital map data with the permission of Ordnance Survey, the Controller of Her Majesty's Stationery Office.
 © Crown copyright. 100023421
 Licence Number

DISABLED PERSONS' PARKING PLACE
43 GLEN CRESCENT, INVERKIP
PLACE No. 1643

Inverclyde
 council
Environmental Services
 Regeneration & Environment
 Corporate Director: Aubrey Fairweather
 Municipal Buildings
 Clyde Square
 Greenock
 PA15 1LY
 Tel: 01475 712712
 Fax: 01475 712731
 aubrey.fairweather@inverclyde.gov.uk



DISABLED PERSONS' PARKING PLACE
 68 THE ESPLANADE, GREENOCK
 PLACE No. 1644

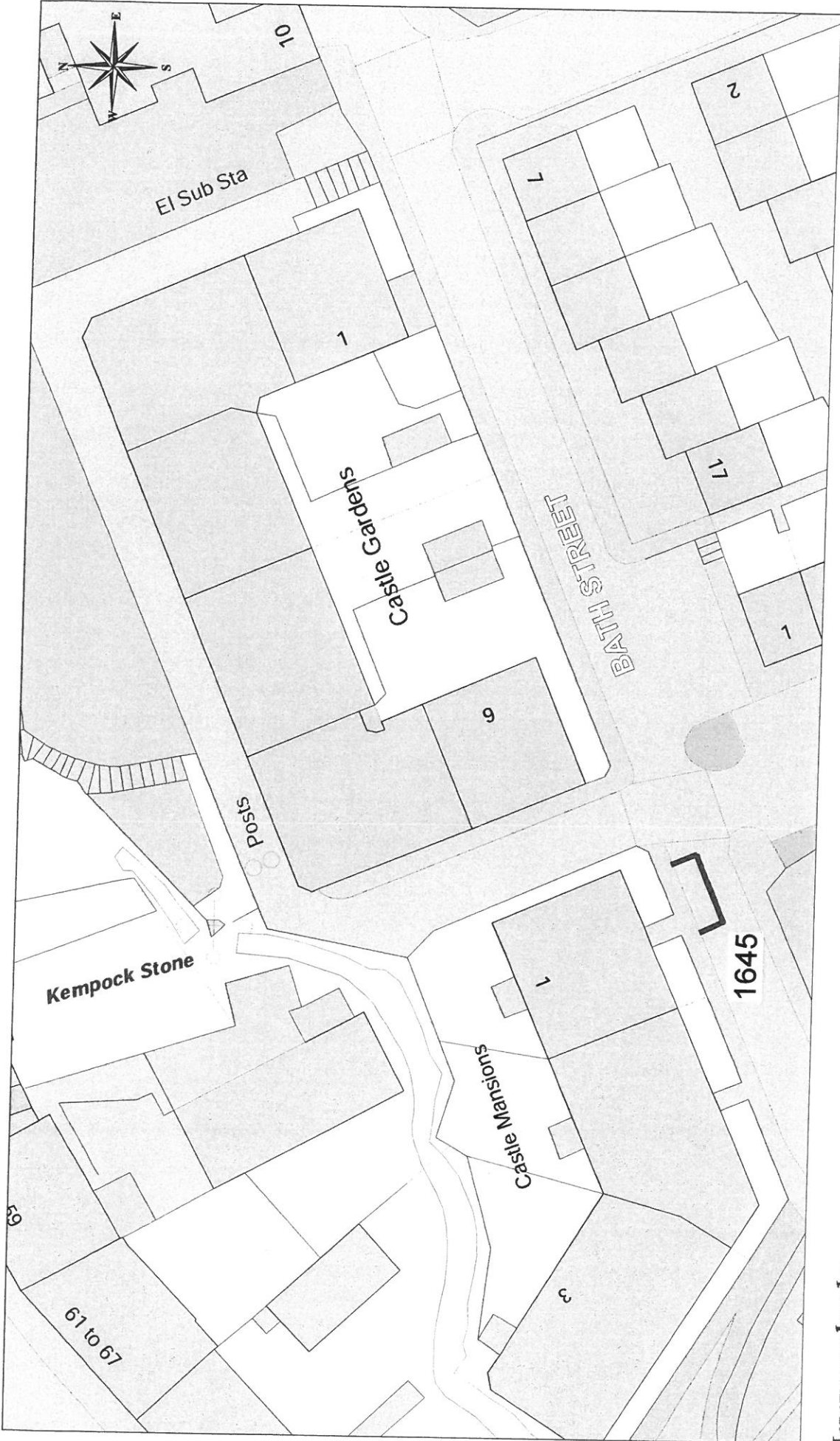
Inverclyde
 council
 Environmental Services

Regeneration & Environment
 Corporate Director: Aubrey Fawcett

Municipal Buildings
 Clyde Square
 Greenock
 PA15 1LY
 Tel: 01475 712712
 Fax: 01475 712731
aubrey.fawcett@inverclyde.gov.uk



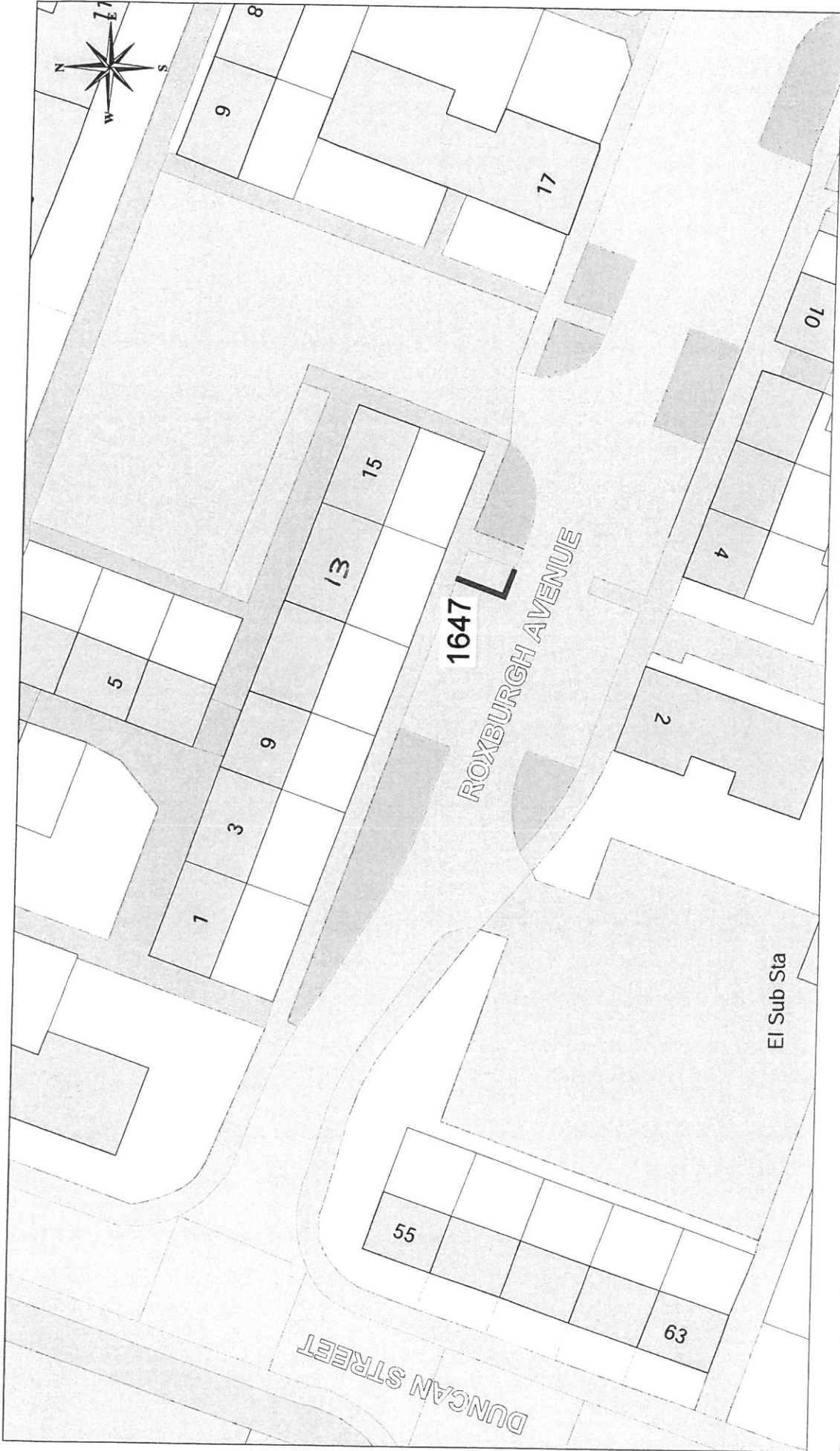
This material has been reproduced from
 Ordnance Survey data with the
 permission of the Controller of
 Her Majesty's Stationery Office.
 Licence Number: 100023421




 Ordnance Survey
 Licensed System Supplier
This material has been reproduced from Ordnance Survey digital map data with the permission of Ordnance Survey on behalf of Her Majesty's Stationery Office. © Crown copyright. 100023421

DISABLED PERSONS' PARKING PLACE
1 CASTLE MANSIONS, GOUROCK
PLACE No. 1645

Inverclyde
 council
 Environmental Services
 Regeneration & Environment
 Corporate Director: Aubrey Fawcett
 Municipal Buildings
 Clyde Square
 Greenock
 PA15 1LY
 Tel: 01475 712712
 Fax: 01475 712731
aubrey.fawcett@inverclyde.gov.uk





 Licensed System Supplier

 This material has been reproduced from the Ordnance Survey map data with the permission of the Controller of Her Majesty's Stationery Office.

 © Crown copyright.

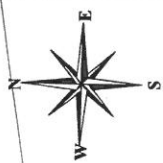
 Licence Number: 10003421

DISABLED PERSONS' PARKING PLACE
 13 ROXBURGH AVENUE, GREENOCK
 PLACE No. 1647

Inverclyde council
 Environmental Services

 Regeneration & Environment
 Corporate Director: Aubrey Fawcett

 Municipal Buildings
 Clyde Square
 Greenock
 PA15 1LY
 Tel: 01475 712712
 Fax: 01475 712731
 aubrey.fawcett@inverclyde.gov.uk



LINNET ROAD

27

13

34

24

MAVIS ROAD 1696

23

35

17



Licensed System Supplier

This material has been reproduced from
Ordnance Survey digital map data with
the permission of the Controller of
Her Majesty's Stationery Office.
© Crown copyright.
Licence Number: 100023421

DISABLED PERSONS' PARKING PLACE
28 MAVIS ROAD, GREENOCK
PLACE No. 1696

Inverclyde
council
Environmental Services

Regeneration & Environment
Corporate Director: Aubrey Fawcett

Municipal Buildings
Clyde Square
Greenock

PA15 1LY

Tel: 01475 712712

Fax: 01475 712731

aubrey.fawcett@inverclyde.gov.uk

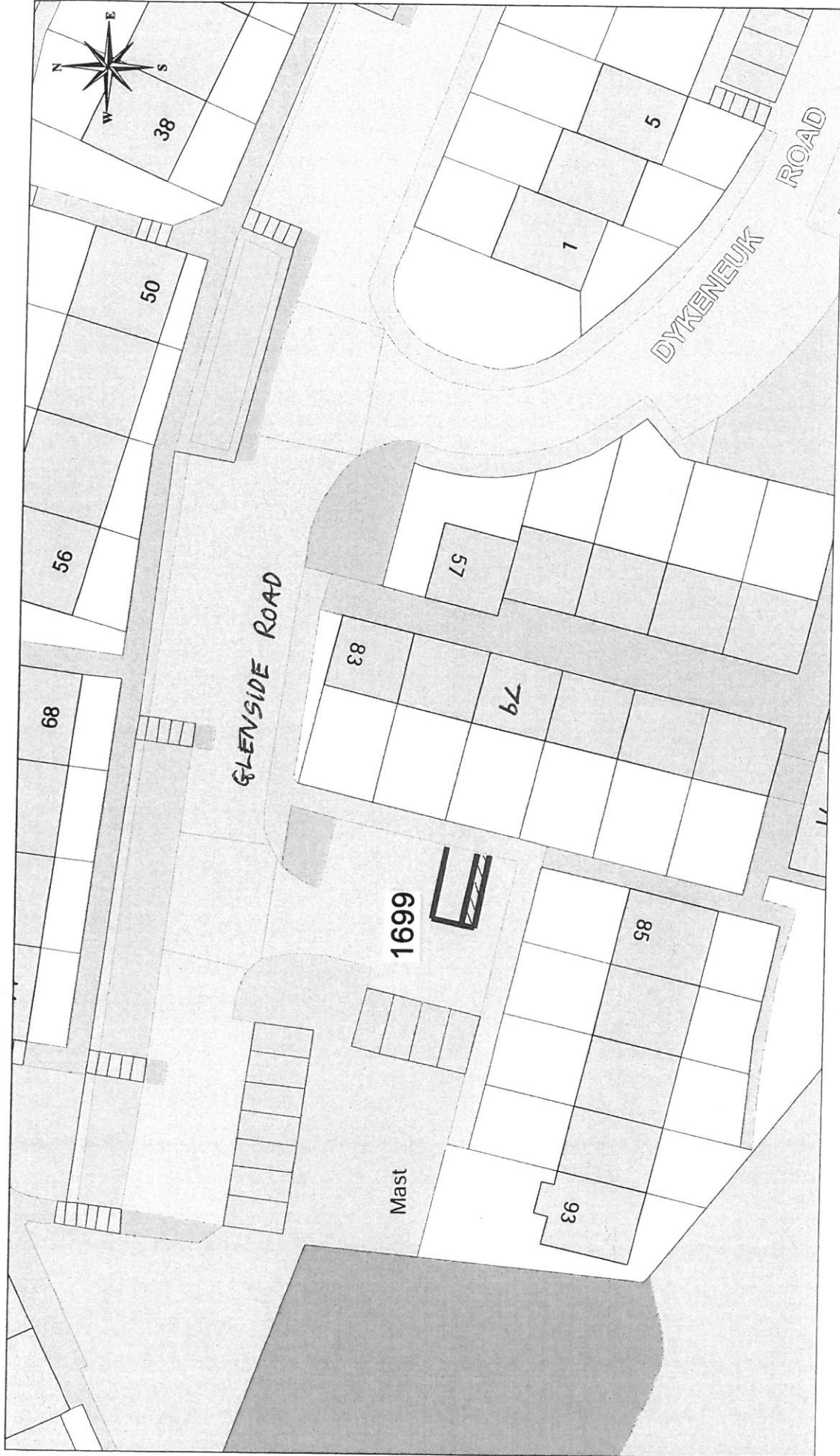



 Ordnance Survey
 Licensed System Supplier
This material has been reproduced from Ordnance Survey digital map data with the permission of Ordnance Survey, Her Majesty's Stationery Office. © Crown copyright. Licence Number: 00003421

DISABLED PERSONS' PARKING PLACE
5 MILTON ROAD, PORT GLASGOW
PLACE No. 1698

Inverclyde
 council
Environmental Services

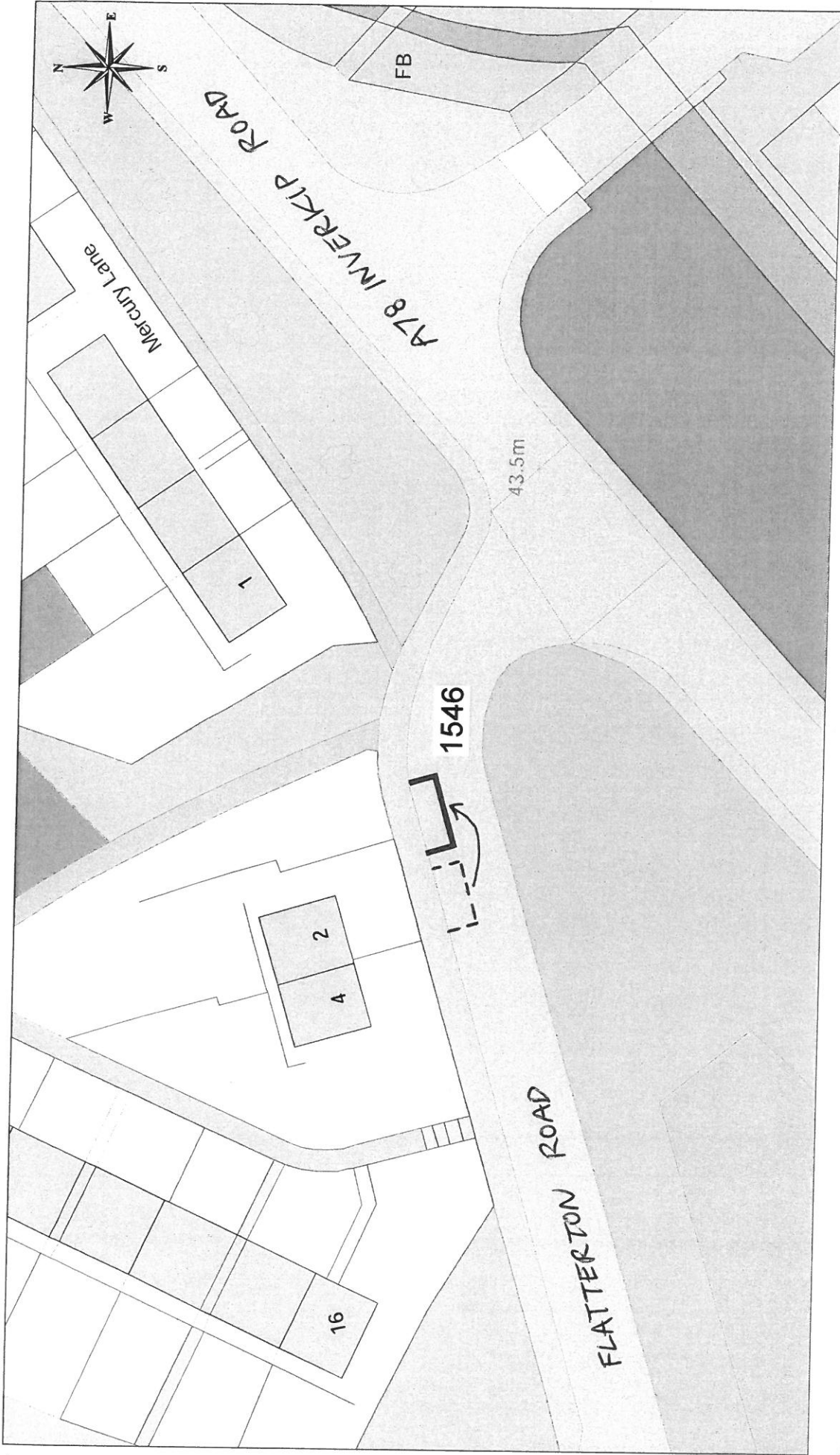
Regeneration & Environment
 Corporate Director: Aubrey Fawcett
 Municipal Buildings
 Clyde Square
 Greenock
 PA15 1LY
 Tel: 01475 712712
 Fax: 01475 712731
 aubrey.fawcett@inverclyde.gov.uk



DISABLED PERSONS' PARKING PLACE
 79 GLENSIDE ROAD, PORT GLASGOW
 PLACE No. 1699

Inverclyde
 council
 Environmental Services

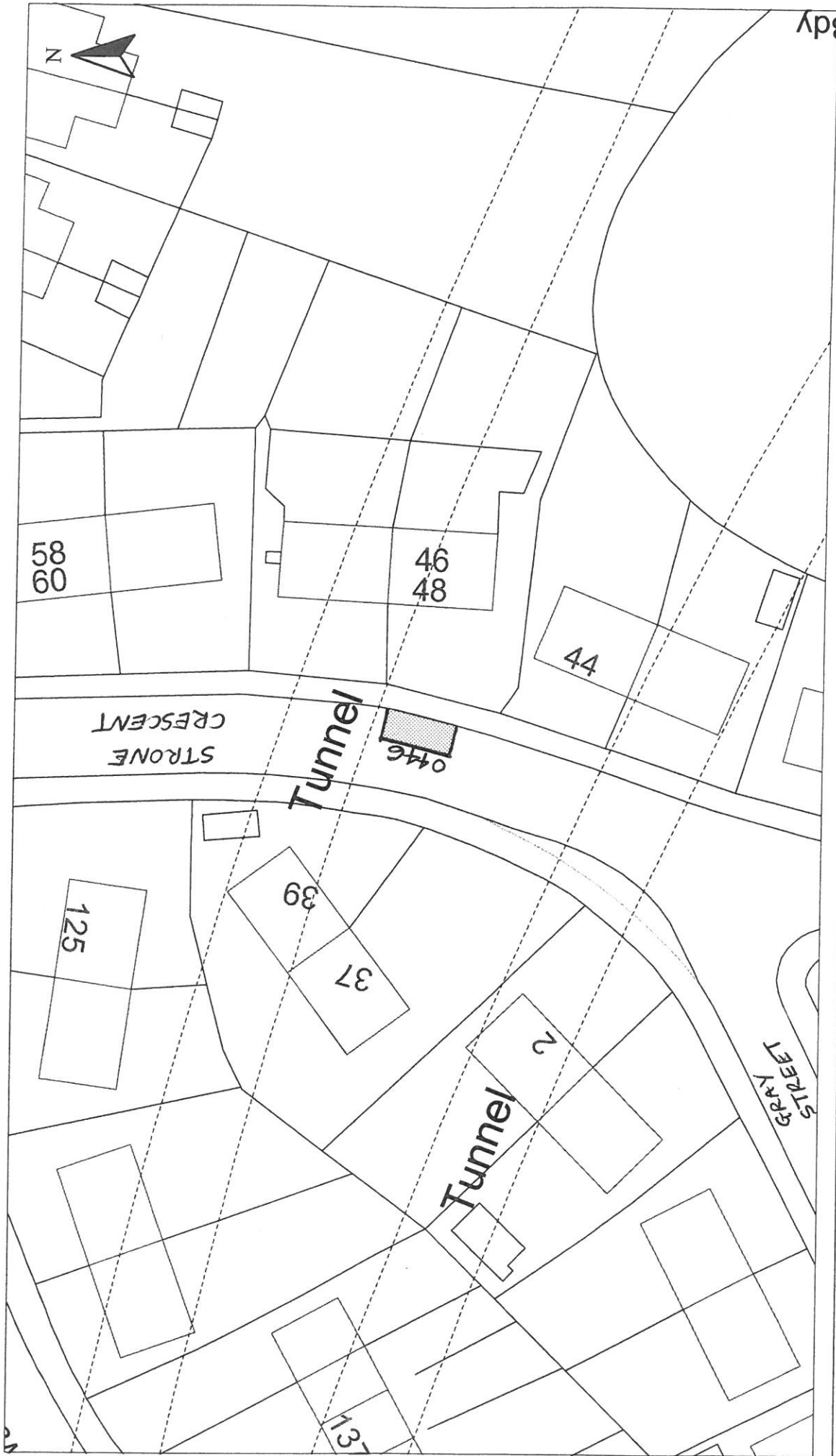
Regeneration & Environment
 Corporate Director: Aubrey Fawcett
 Municipal Buildings
 Clyde Square
 Greenock
 PA15 1LY
 Tel: 01475 712712
 Fax: 01475 712731
 aubrey.fawcett@inverclyde.gov.uk



o/s Ordnance Survey
 Licensed System Supplier
 This material has been reproduced from Ordnance Survey data with the permission of the Controller of Her Majesty's Stationery Office.
 Licence Number: 100003421

DISABLED PERSONS' PARKING PLACE
2 FLATTERTON ROAD, GREENOCK
PLACE No. 1546

Inverclyde
 council
 Environmental Services
 Regeneration & Environment
 Corporate Director: Aubrey Fawcett
 Municipal Buildings
 Clyde Square
 Greenock
 PA15 1LY
 Tel: 01475 712712
 Fax: 01475 712731
 aubrey.fawcett@inverclyde.gov.uk



HEAD OF TRANSPORTATION AND ROADS
E. McCARRON C.Eng., M.I.C.E.

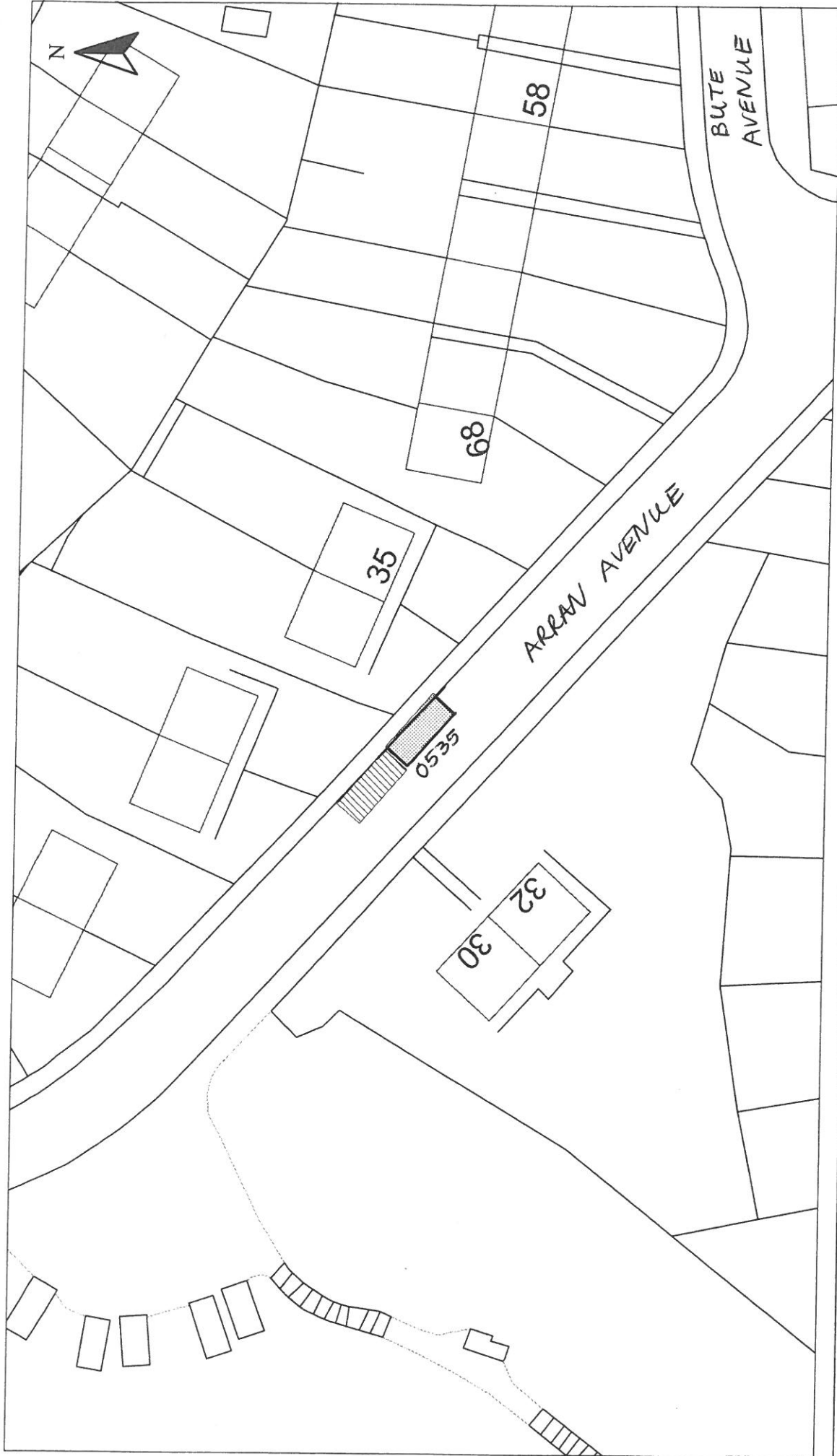
Disabled Bays
71 EAST HAMILTON STREET
GREENOCK, PA15 2UA

Reproduced from Ordnance Survey mapping with the permission of the Controller of Her Majesty's Stationery Office. Crown Copyright.
Unauthorised reproduction infringes Crown Copyright and may result in prosecution or legal proceedings.
Licence No. LA03097L

DISABLED PERSONS' PARKING PLACE
48 STROME CRESCENT, GREENOCK
PLACE No. 0446 REVOCATION

Scale : 1:500
Prepared by : R. MACKAY
Checked by :
Date : JAN 2005

Drawn by : R. MACKAY
Approved by :
File No. : 19/12



HEAD OF TRANSPORTATION AND ROADS
R.M. GRAHAM M.C.M.I., A.I.M.B.M.

Disabled Bays
71 EAST HAMILTON STREET
GREENOCK, PA15 2UA

Reproduced from Ordnance Survey mapping with the permission of the Controller of Her Majesty's Stationery Office. Crown Copyright. Unauthorised reproduction infringes Crown Copyright and may result in prosecution or legal proceedings.

Licence No. LA03097L



DISABLED PERSONS' PARKING PLACE
32 ARRAN AVENUE, PORT GLASGOW
PLACE No. 0535 REVOCATION

Scale : 1:500

Prepared by : R. MACKAY

Drawn by : R. MACKAY

Drawing No. :

Date : AUG 2006

Checked by :

Approved by :

File No. : 19/12



Reproduced from Ordnance Survey mapping with the permission of the Controller of Her Majesty's Stationery Office. Crown Copyright. Unauthorised reproduction infringes Crown Copyright and may result in prosecution or legal proceedings.

Ordnance Survey
Licence No. LA00097L

HEAD OF TRANSPORTATION AND ROADS
R.M. GRAHAM M.C.M.I., A.I.M.B.M.

71 EAST HAMILTON STREET
GREENOCK, PA15 2UA

Disabled Bays

DISABLED PERSONS' PARKING PLACE
17 BAWHIRLEY ROAD, GREENOCK
PLACE No. 0543 REVOCATION

Scale :	1:500	Date :	AUG 2006
Prepared by :	R. MACKAY	Checked by :	
Drawn by :	R. MACKAY	Approved by :	
Drawing No. :		File No. :	19/12



Reproduced from Ordnance Survey mapping with the permission of the Controller of Her Majesty's Stationery Office. Copyright. Unauthorised reproduction infringes Crown Copyright and may result in prosecution or legal proceedings.

Ordnance Survey
Licence No. LA03097L

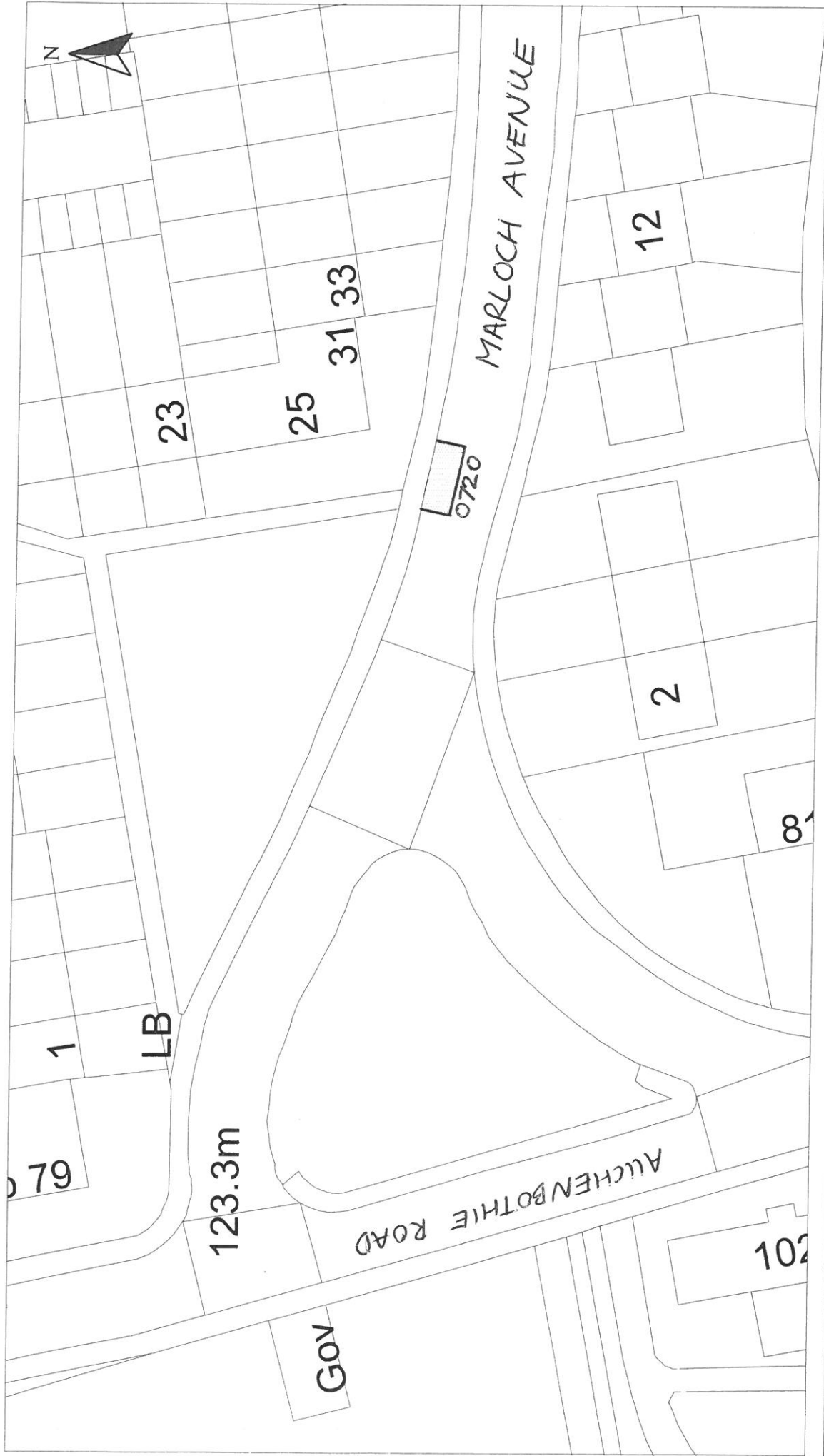
HEAD OF TRANSPORTATION AND ROADS
R.M. GRAHAM M.C.M.I., A.I.M.B.M.

71 EAST HAMILTON STREET
GREENOCK, PA15 2UA

Disabled Bays

DISABLED PERSONS' PARKING PLACE
18 GLENSIDE ROAD, PORT GLASGOW
PLACE No. 0621 REVOCATION

Scale :	1:500	Date :	OCT 2006
Prepared by :	R. MACKAY	Checked by :	
Drawn by :	R. MACKAY	Approved by :	
Drawing No. :		File No. :	19/12



HEAD OF PLANNING AND TRANSPORTATION
F. K. WILLIAMSON

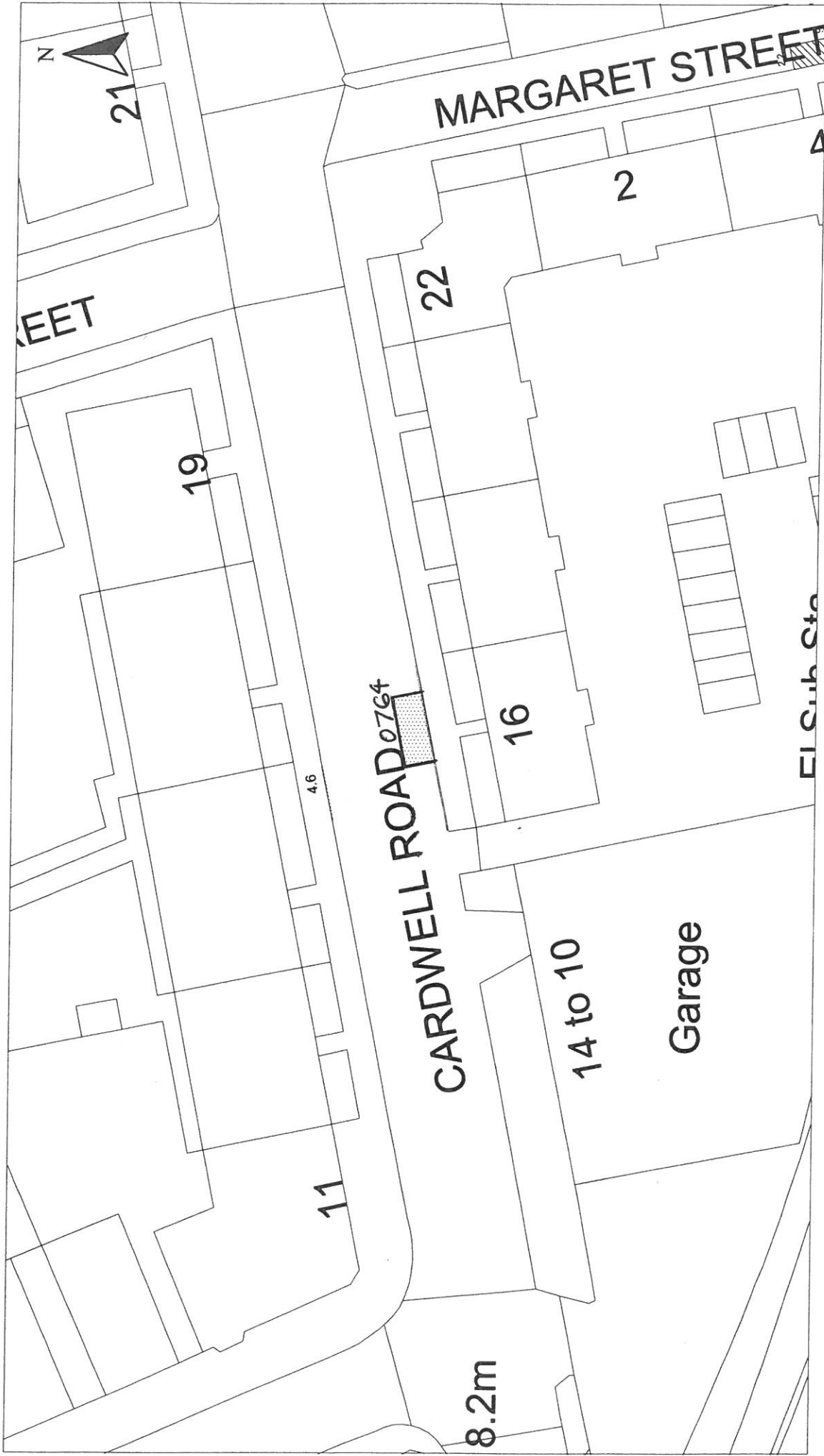
Disabled Bays
6 CATHCART SQUARE
GREENOCK, PA15 1LS

Reproduced from Ordnance Survey mapping with the permission of the Controller of Her Majesty's Stationery Office. Crown Copyright. Use in any form infringes Crown Copyright and may result in prosecution or legal proceedings.
Licence No. 1000023421
Ordnance Survey

DISABLED PERSONS' PARKING PLACE
25 MARLOCH AVENUE, PORT GLASGOW
PLACE No. 0720 REVOCATION

Scale : 1:500
Prepared by : R. MACKAY
Drawn by : R. MACKAY
Drawing No. :

Date : SEPT 2007
Checked by :
Approved by :
File No. : 19/12



HEAD OF PLANNING, HOUSING AND
TRANSPORTATION :- F. K. WILLIAMSON

Disabled Bays
6 CATHCART SQUARE
GREENOCK, PA15 1LS

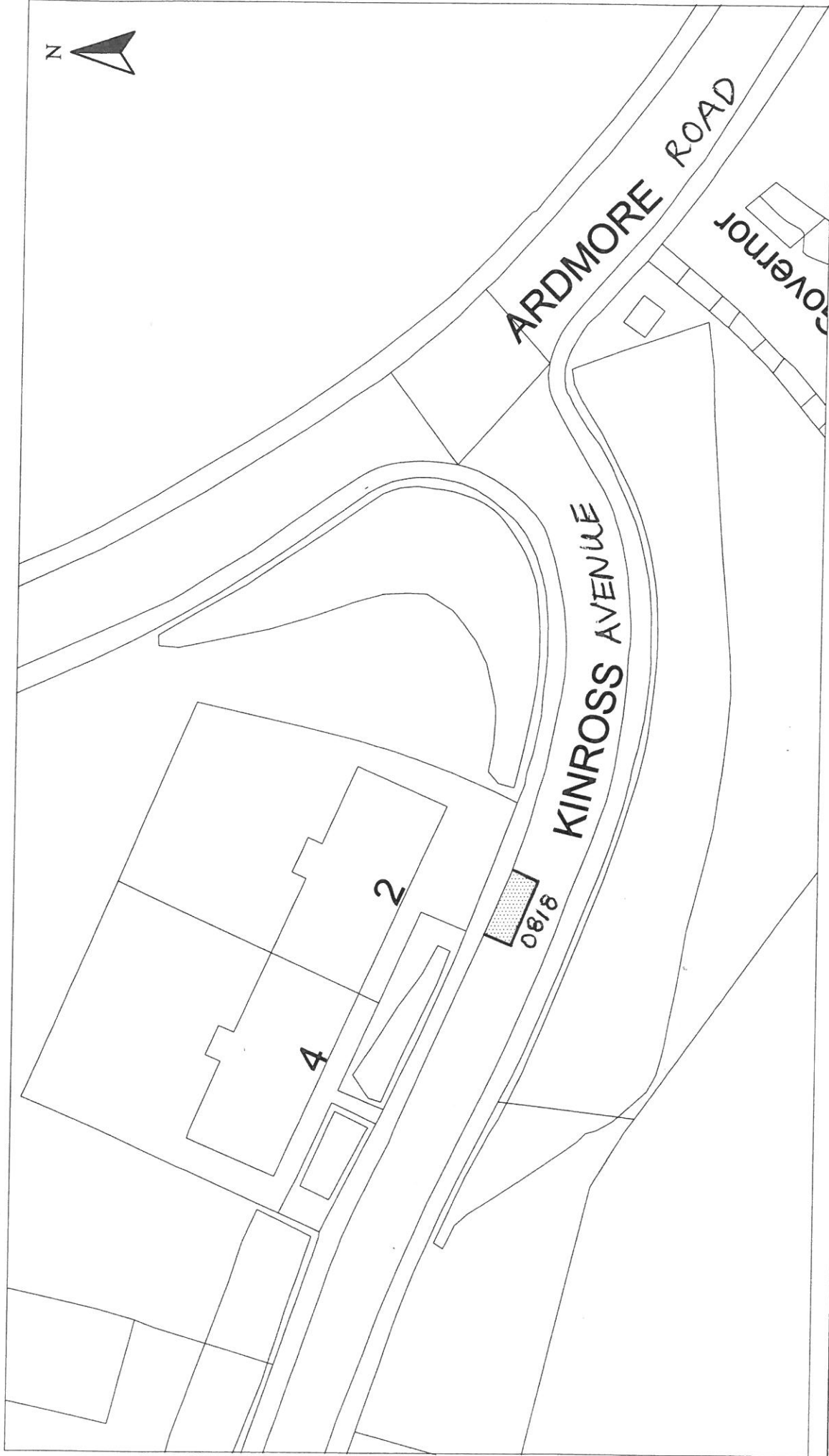
Reproduced from Ordnance Survey mapping with the permission
of the Controller of Her Majesty's Stationery Office. Crown
Copyright. Unauthorised reproduction infringes Crown Copyright
and may result in prosecution or legal proceedings.

Licence No. 1000023421
(2008)

Ordnance Survey

DISABLED PERSONS' PARKING PLACE
16 CARDWELL ROAD, GOUROCK
PLACE No. 0764 REVOCATION

Scale :	1:500	Date :	FEB 2008
Prepared by :	R. MACKAY	Checked by :	
Drawn by :	R. MACKAY	Approved by :	
Drawing No. :		File No. :	19/12



HEAD OF PLANNING, HOUSING AND
TRANSPORTATION :- F. K. WILLIAMSON

Disabled Bays
6 CATHCART SQUARE
GREENOCK, PA15 1LS

Reproduced from Ordnance Survey mapping with the permission
of the Controller of Her Majesty's Stationery Office. Crown
Copyright. Unauthorised reproduction infringes Crown Copyright
and may result in prosecution or legal proceedings.

Licence No. 1000023421
(2008)



DISABLED PERSONS' PARKING PLACE
2b KINROSS AVENUE, PORT GLASGOW
PLACE No. 0818 REVOCATION

Scale : 1:500

Prepared by : R. MACKAY

Drawn by : R. MACKAY

Drawing No. :


Date : MAY 2008

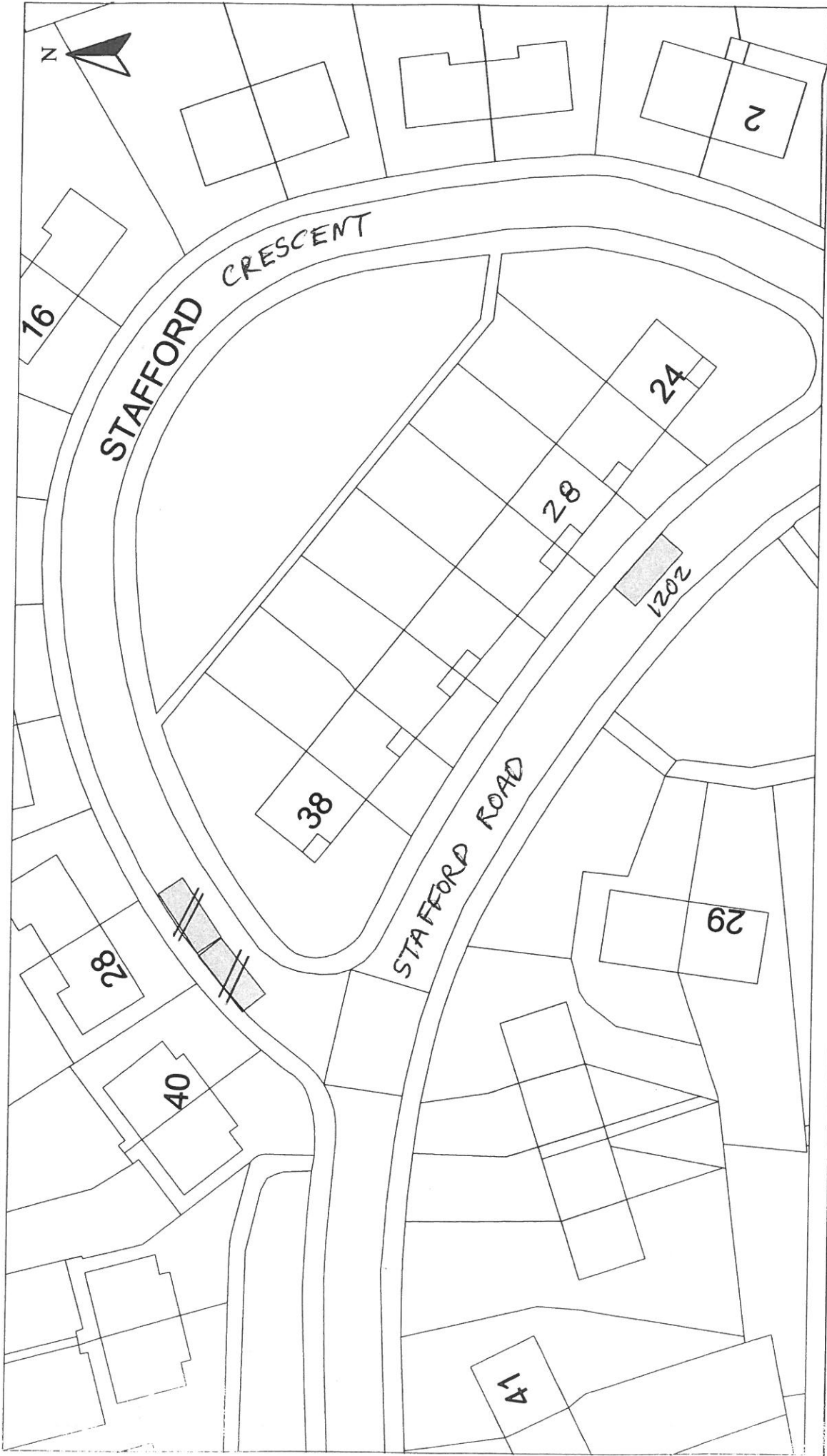
Checked by :

Approved by :

File No. : 19/12



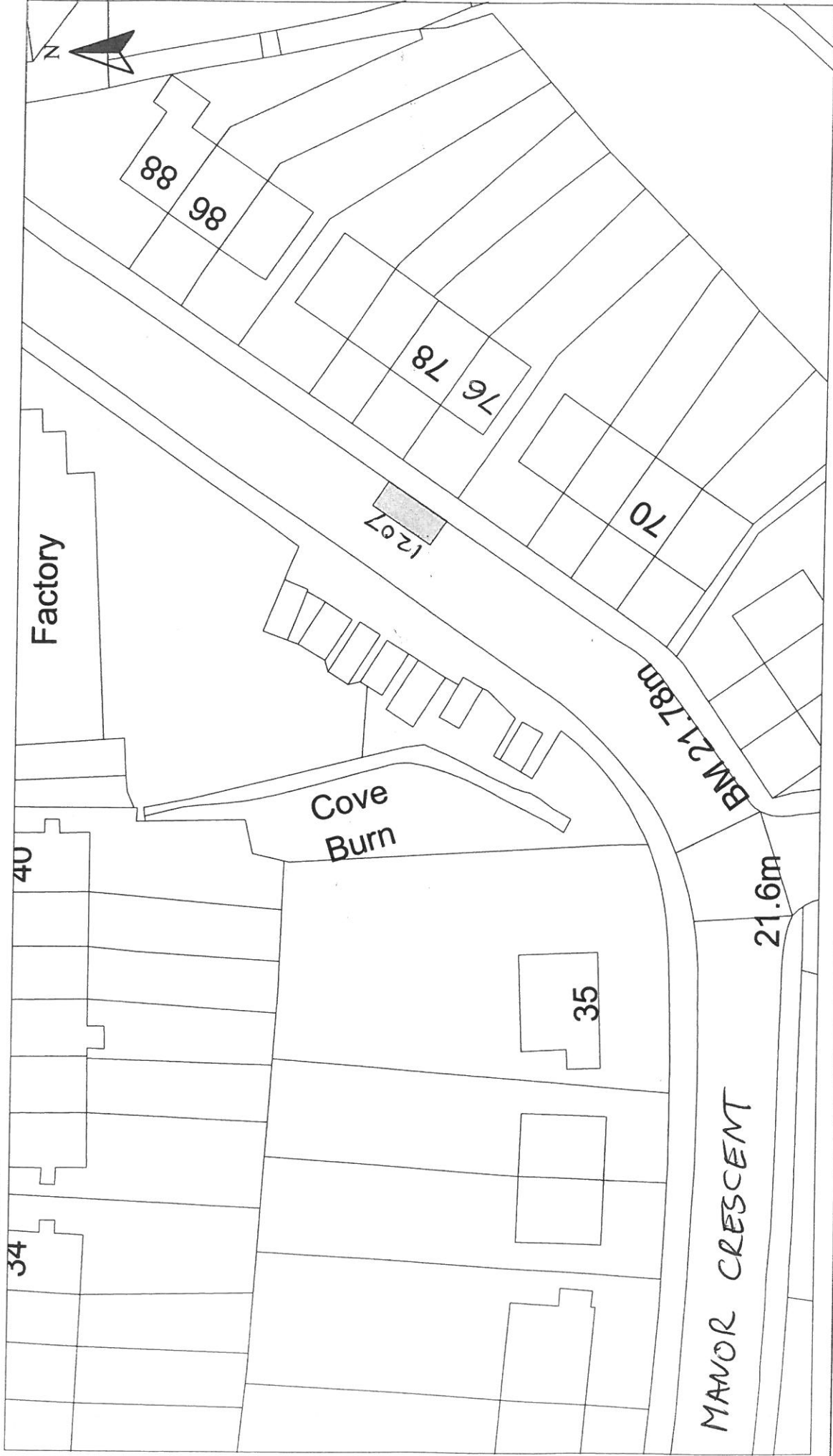
Disabled Bays	HEAD OF SERVICE ALAN G BARNES MCIWM CEnv 71 EAST HAMILTON STREET GREENOCK, PA15 2UA	Reproduced from Ordnance Survey mapping with the permission of the Controller of Her Majesty's Stationary Office. Crown Copyright. Unauthorised reproduction infringes Crown Copyright and may result in prosecution or legal proceedings.  Licence No. LA03097L	DISABLED PERSONS' PARKING PLACE 46 BALLOCH ROAD, GREENOCK PLACE No. 0860 REVOCATION	Scale : 1:500 Prepared by : R. MACKAY Drawn by : R. MACKAY Drawing No. :	Date : FEB 2009 Checked by : Approved by : File No. : 19/12
---------------	--	--	---	---	--



<p>DISABLED PERSONS' PARKING PLACE 28 STAFFORD ROAD, GREENOCK PLACE No. 1202 REVOCATION</p>		<p>Scale : 1:500 Prepared by : R. MACKAY Drawn by : R. MACKAY Drawing No. : 19/12</p>	<p>Date : OCT 2012 Checked by : Approved by :</p>
<p>HEAD OF SERVICE IAN MOFFAT</p>	<p>Reproduced from Ordnance Survey mapping with the permission of the Controller of Her Majesty's Stationery Office. Crown Copyright. Unauthorised reproduction infringes Crown Copyright and may result in prosecution or legal proceedings.</p> <p>Ordnance Survey Licence No. LA03097L</p>		
<p>71 EAST HAMILTON STREET GREENOCK, PA15 2UA</p>	<p>File No. : 19/12</p>		

Inverclyde
council

ENVIRONMENTAL & COMMERCIAL SERVICES



HEAD OF SERVICE
IAN MOFFAT

Disabled Bays
71 EAST HAMILTON STREET
GREENOCK, PA15 2UA

Reproduced from Ordnance Survey mapping with the permission of the Controller of Her Majesty's Stationery Office. Copyright. Unauthorised reproduction infringes Crown Copyright and may result in prosecution or legal proceedings.

Licence No. LA03097L
Ordnance Survey

DISABLED PERSONS' PARKING PLACE
76 MANOR CRESCENT, GOUROCK
PLACE No. 1207 REVOCATION

Scale :	1:500	Date :	APRIL 2013
Prepared by :	R. MACKAY	Checked by :	
Drawn by :	R. MACKAY	Approved by :	
Drawing No. :		File No. :	19/12



OS Ordnance Survey
 Licensed System Supplier
 This material has been reproduced from Ordnance Survey digital material under the permission of the Controller of Her Majesty's Stationery Office.
 Licence Number: 100023421

DISABLED PERSONS' PARKING PLACE
24 MAVIS ROAD, GREENOCK
PLACE No. 1473 REVOCATION

Inverclyde
 council
 Environmental Services
 Regeneration & Environment
 Corporate Director: Aubrey Fawcett
 Municipal Buildings
 Clyde Square
 Greenock
 PA15 1LY
 Tel: 01475 712712
 Fax: 01475 727351
 aubrey.fawcett@inverclyde.gov.uk

THE INVERCLYDE COUNCIL

**DISABLED PERSONS' PARKING PLACES
(ON-STREET) ORDER NO. 4 2016**

**Statement of Reasons for Proposing to Make
the above Order**

It is considered necessary, in order to comply with Section 5 of The Disabled Persons' Parking Places (Scotland) Act 2009, to make the above Order to provide assistance for disabled persons who hold a badge under the Disabled Persons (Badges for Motor Vehicles) (Scotland) Regulations 2000 as amended and to revoke those parking places no longer required to maximise street parking capacity.

Robert Graham
Head of Environmental & Commercial Services
1 Ingleston Park
Cartsburn Street
GREENOCK
PA15 4UE